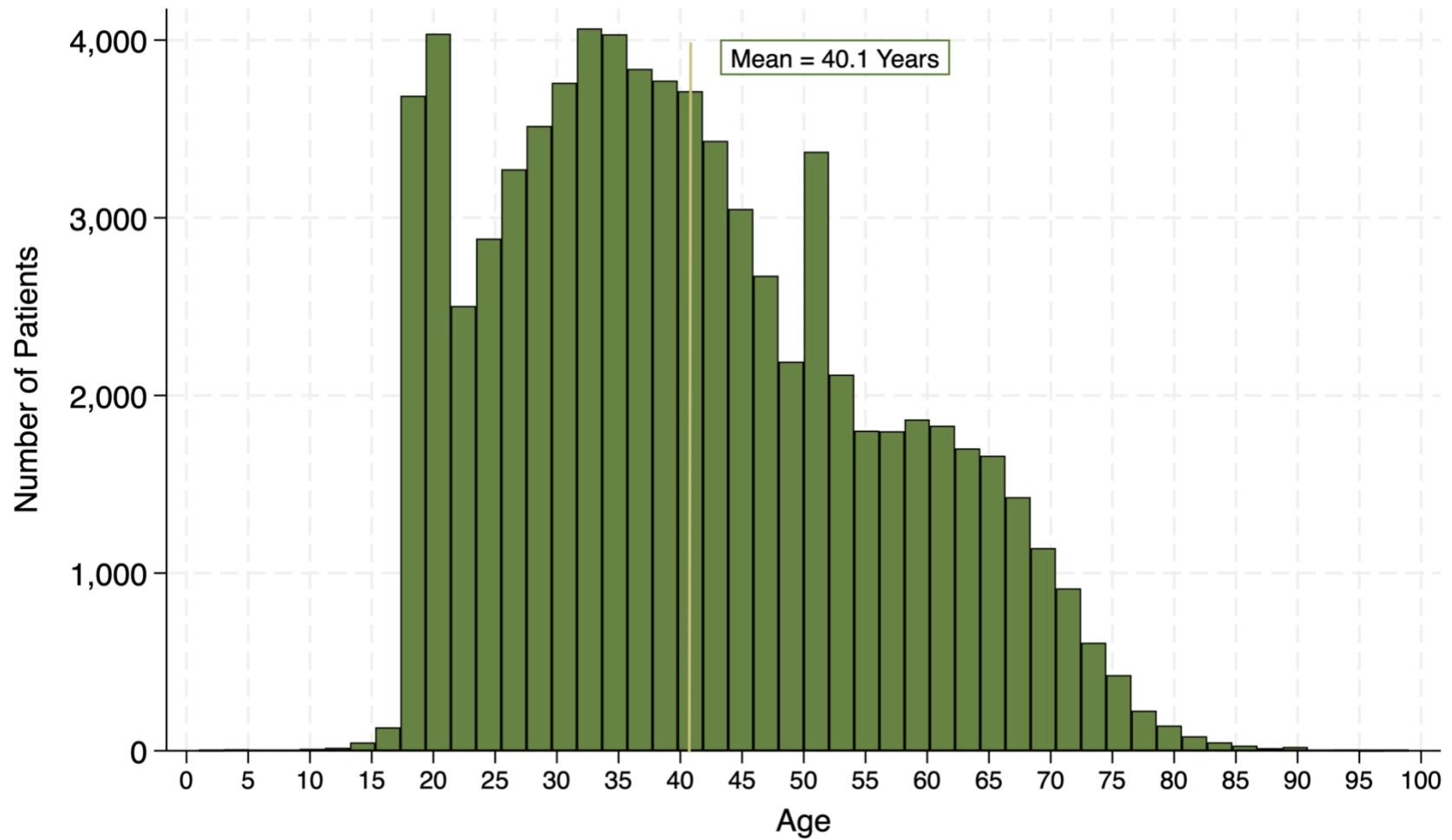


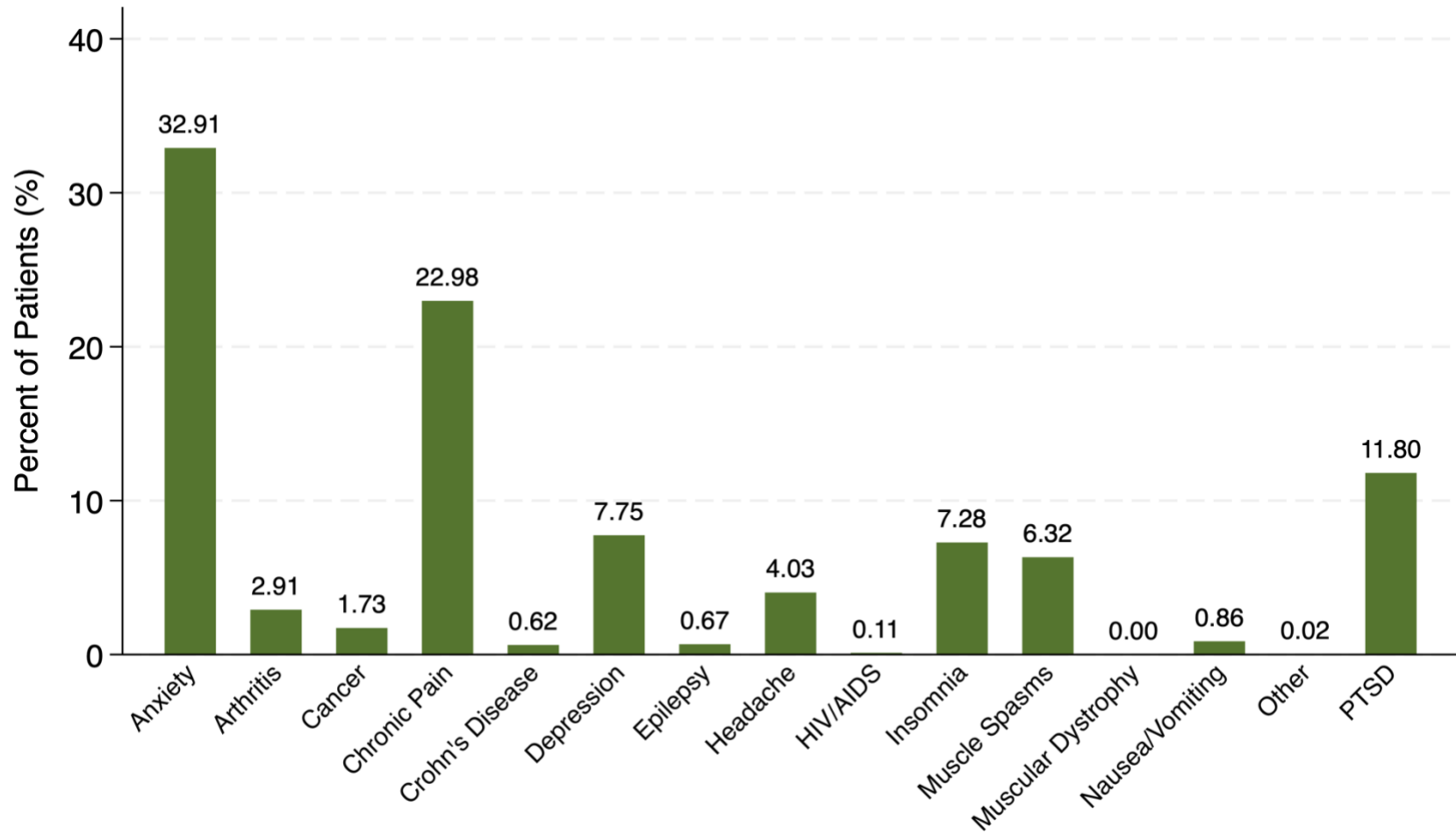
Doucette et al., (2024) Towards a comprehensive understanding of complex medical conditions among patients in a large medical cannabis registry: a descriptive analysis, *Population Medicine*, Supplemental Material

**Supplemental Figure 1:** Distribution of medical cannabis patient's ages (n = 75,904), 2022 United States using the Leafwell Patient Database



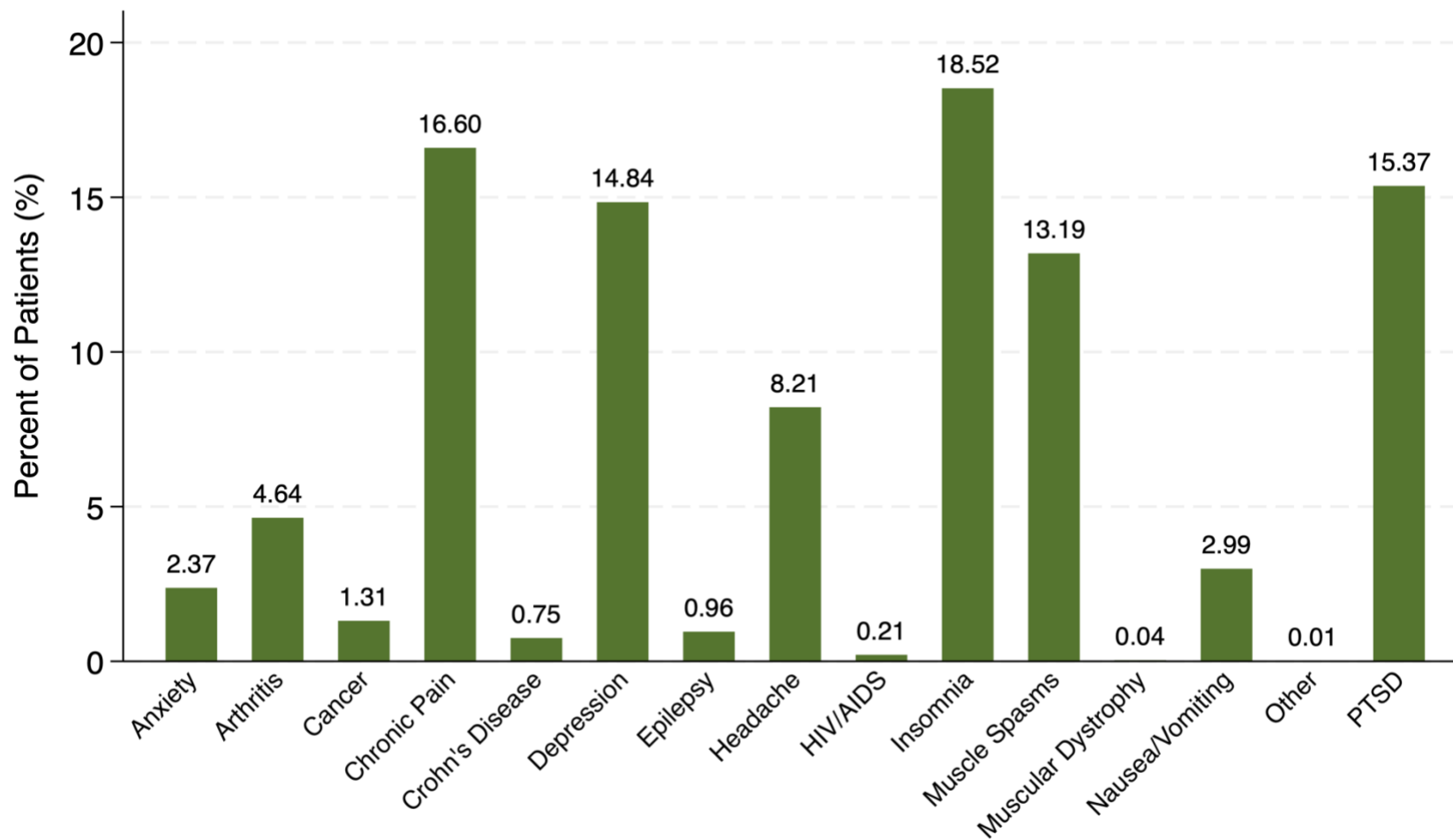
Doucette et al., (2024) Towards a comprehensive understanding of complex medical conditions among patients in a large medical cannabis registry: a descriptive analysis, *Population Medicine*, Supplemental Material

**Supplemental Figure 2:** Top 15 second rank-order self-reported medical conditions by percentage among the Leafwell Patient Database (n = 42,517), 2022 United States



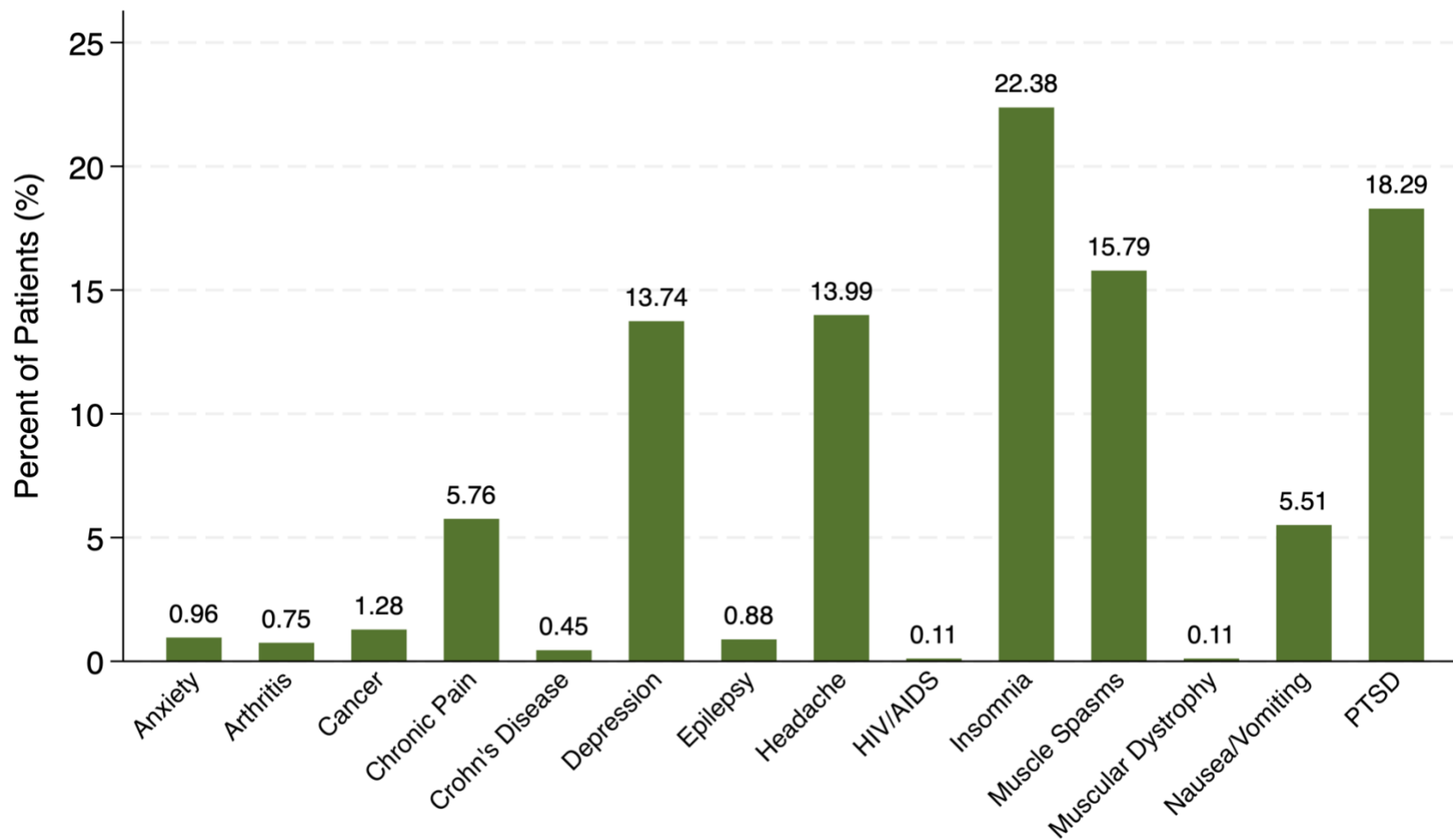
Doucette et al., (2024) Towards a comprehensive understanding of complex medical conditions among patients in a large medical cannabis registry: a descriptive analysis, *Population Medicine*, Supplemental Material

**Supplemental Figure 3:** Top 15 third rank-order self-reported medical conditions by percentage among the Leafwell Patient Database (n = 19,420), 2022 United States



Doucette et al., (2024) Towards a comprehensive understanding of complex medical conditions among patients in a large medical cannabis registry: a descriptive analysis, *Population Medicine*, Supplemental Material

**Supplemental Figure 4:** Top 15 fourth rank-order self-reported medical conditions by percentage among the Leafwell Patient Database (n = 8,026), 2022 United States



Doucette et al., (2024) Towards a comprehensive understanding of complex medical conditions among patients in a large medical cannabis registry: a descriptive analysis, *Population Medicine*, Supplemental Material

**Supplemental Figure 5:** Top 15 fifth rank-order self-reported medical conditions by percentage among the Leafwell Patient Database (n = 3,495), 2022 United States

