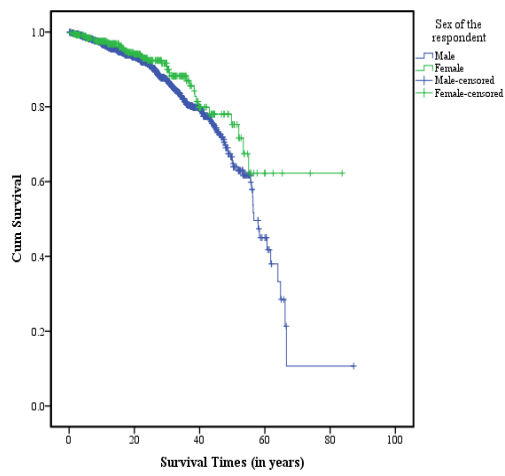
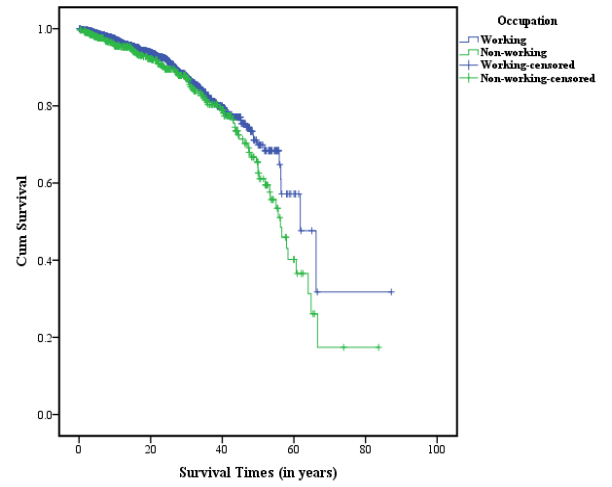


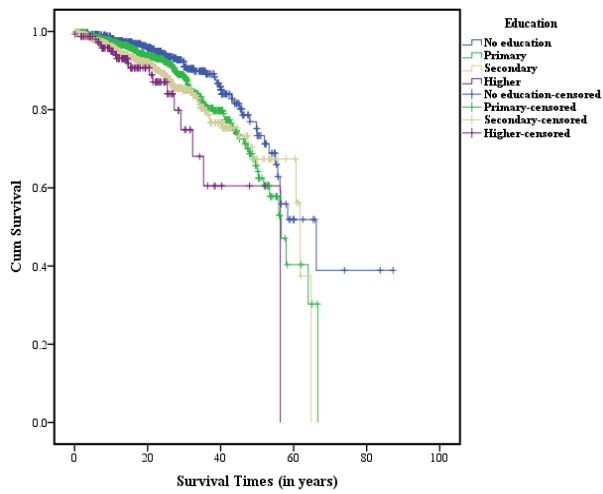
## Supplementary Figures



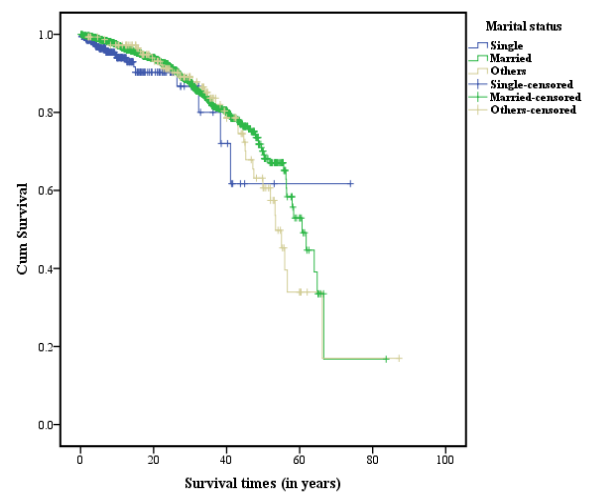
(a)



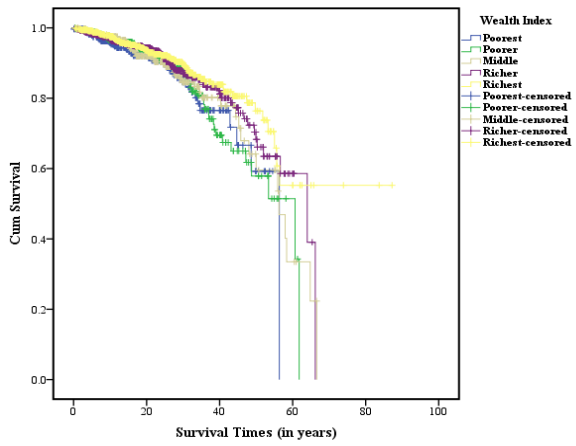
(b)



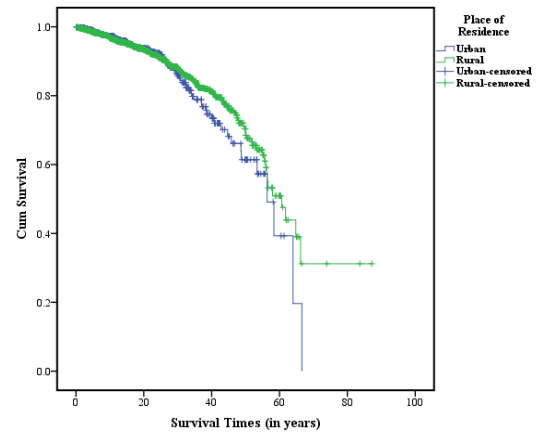
(c)



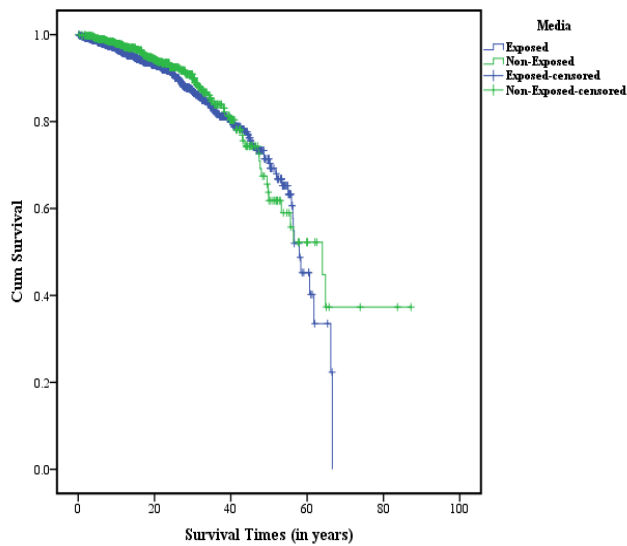
(d)



(e)

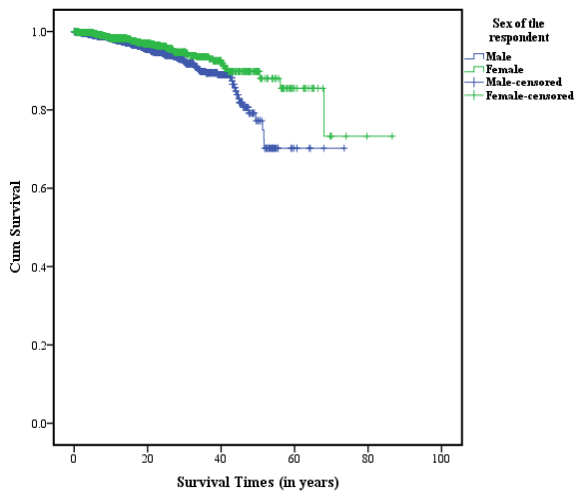


(f)

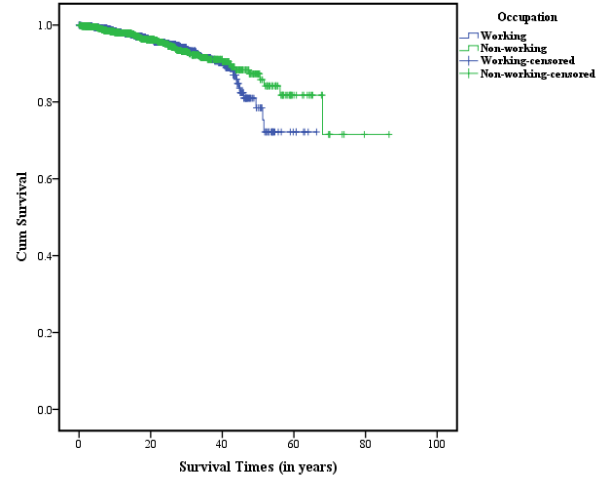


(g)

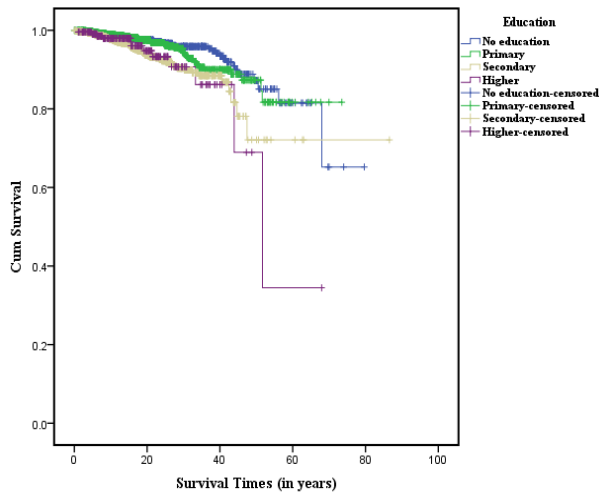
**Supplementary Figure 1:** Kaplan Meier survival curve of smoked tobacco users by different covariates across North-Eastern states of India. *A. Kaplan–Meier survival estimates for sex of the respondents B. Kaplan–Meier survival estimates for occupation of the respondents C. Kaplan–Meier survival estimates for educational level D. Kaplan–Meier survival estimates for marital status E. Kaplan–Meier survival estimates for wealth index F. Kaplan–Meier curves for survival estimates for place of residence G. Kaplan–Meier survival estimates for media exposers*



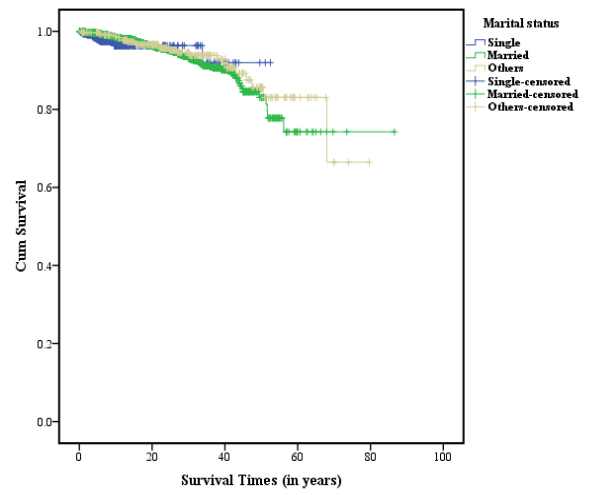
(a)



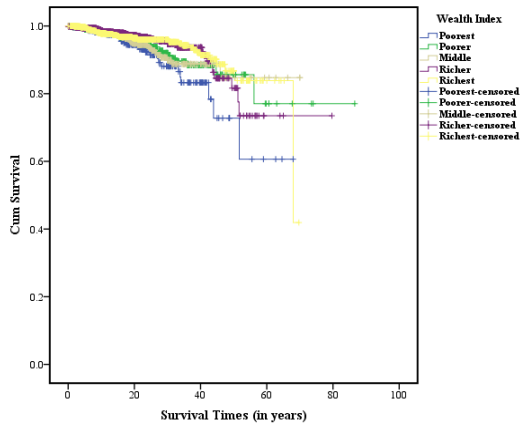
(b)



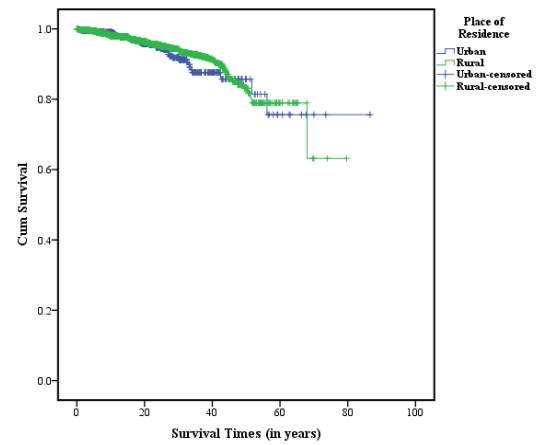
(c)



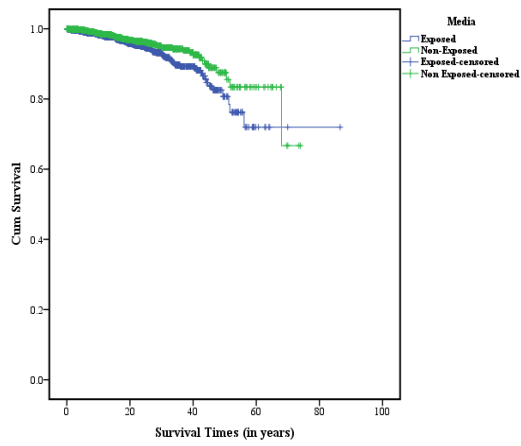
(d)



(e)



(f)



(g)

**Supplementary Figure 2:** Kaplan Meier survival curve of users of smokeless tobacco by different covariates across North-Eastern states of India, *A. Kaplan–Meier survival estimates for sex of the respondents, B. Kaplan–Meier survival estimates for occupation of the respondents, C. Kaplan–Meier survival estimates for educational level, D. Kaplan–Meier survival estimates for marital status, E. Kaplan–Meier survival estimates for wealth index, F. Kaplan–Meier curves for survival estimates for place of residence, G. Kaplan–Meier survival estimates for media exposer.*

© 2025 Pathak D. et al.